

Epinutrix

Biomimetic Lipid repair from the scalp to the hair tip!

Properties:

- Expression of genes related to lipid, protein metabolism and of the skin hydration
- Protection against harm and skin recovery
- Improved wet combability, frizz and conditioning
- Increases resistance to breakage
- Sealing of split ends

Composition:

Biomimetic lipid compost obtained from fatty acids originating from vegetable and D-Pantenol through synthesis via enzymatic catalysis, *Eco-friendly* process.



Benefits:

HAIR

- Reconstruction, lipid replenishment
- Strengthening of the strands
- Improved sensorial features: combability, softness, conditioning and untangling
- Light sensorial, without build-up effect
- Sealing of split ends
- Resistance to breakage by combing
- Alignment of cuticles

SCALP

- Maintenance of the barrier function
- Favors hydration
- Stimulus to the natural formation of the lipid cover
- Induction of production of neo-ceramides
- Protection against the harms caused by surfactant agents



INCI: Panthenyl Dibehenate/Oleate
Indication of use: 0.5 a 1.0 %

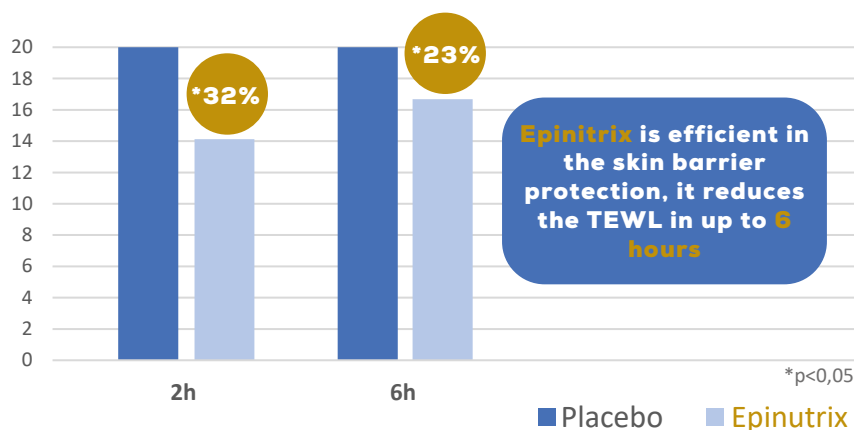
Epikutrix

EPINUTRIX Biomimetic Lipid repair from the scalp to the hair tip!

SCALP TESTS

Instrumental evaluation of the efficacy to the skin protection barrier (TEWL)

TEWL Reduction/Time



HAIR TESTS

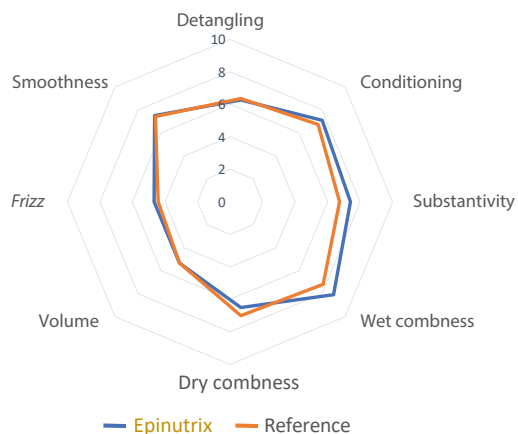
Application Test – Epikutrix vs Reference



HAIR TESTS

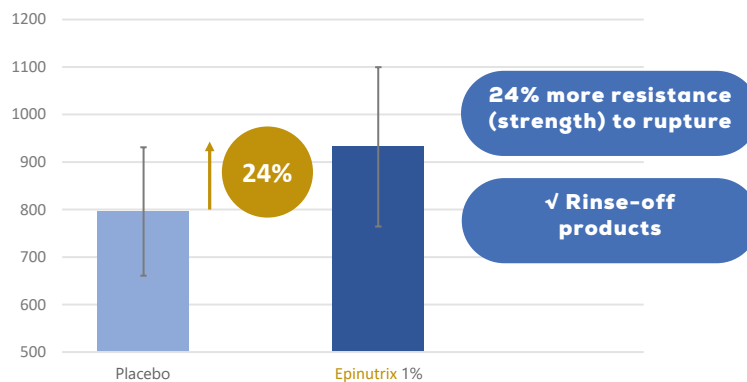
Assessment Test

Epikutrix vs Referência

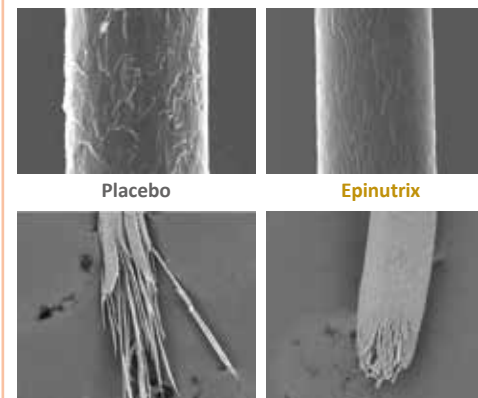


Resistance Increase (Strength)

Strength at breaking point



Efficacy evaluation in the morphologic restoration of hair fiber – EMS



Reduced the cuticles damages

Promoted the restoration of the hair surface

Sealing the tips of the strands